



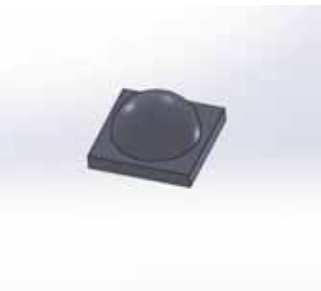
ITEM NO.: INO-T004RP
 Lens Material.: PMMA
 Holder Material.: PC
 Tolerance.: +/-0.05mm
 Operating Temperature range.: -40 deg/+90 deg



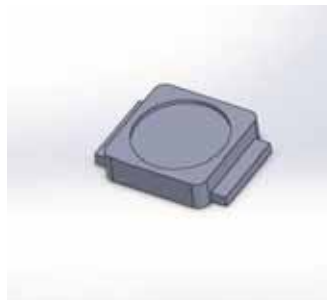
Type : Seoul P4
 Angle at 50 % : 22°
 Measurement at 1 meter



Type : Osram Luw_W5AM
 Angle at 50 % : 22°
 Measurement at 1 meter



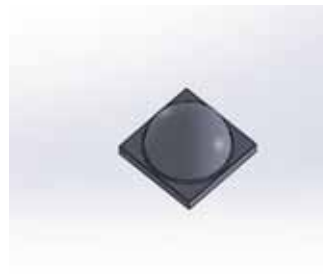
Type : Seoul Z5
 Angle to 50 % : 21°
 Measurement at 1 meter



Type : Nichia NS6W183A
 Angle to 50 % : 22°
 Measurement at 1 meter



Type : Cree XRE
 Angle to 50 % : 20°
 Measurement at 1 meter



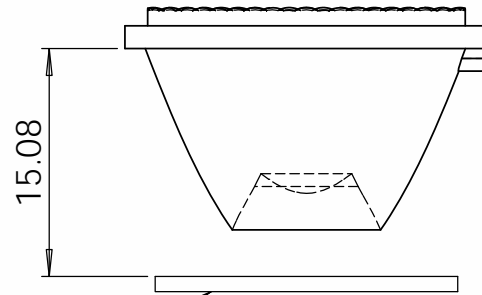
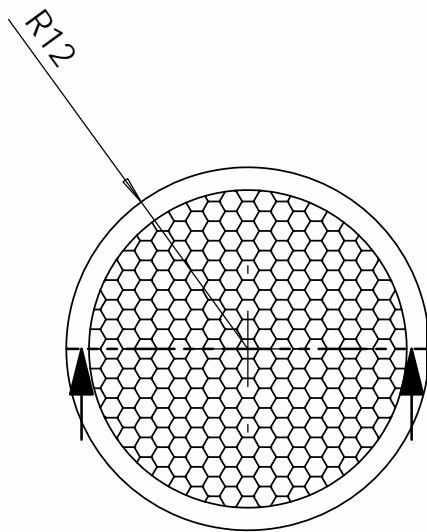
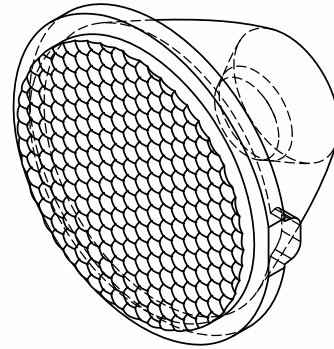
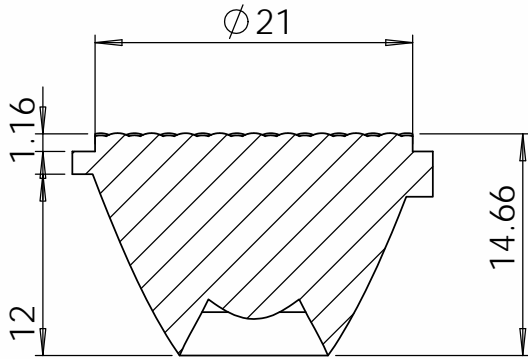
Type : Cree XM-L2
 Angle at 50 % : 24°
 Measurement at 1 meter



Type : Cree XPG
 Angle to 50 % : 22°
 Measurement at 1 meter



Type : Luxeon LXML-PWN1
 Angle to 50 % : 21°
 Measurement at 1 meter



PCB

DO NOT SCALE DRAWING		REVISION	
INNO ELECTRONICS LTD			
TITLE:			
DWG NO.		INO-T004RP	
SCALE: 2:1		PAGE: 2	
		A4	